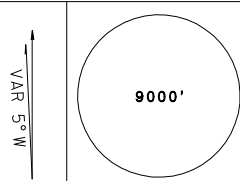


臺灣桃園國際機場
TAIPEI/TAIWAN TAOYUAN INTL AD

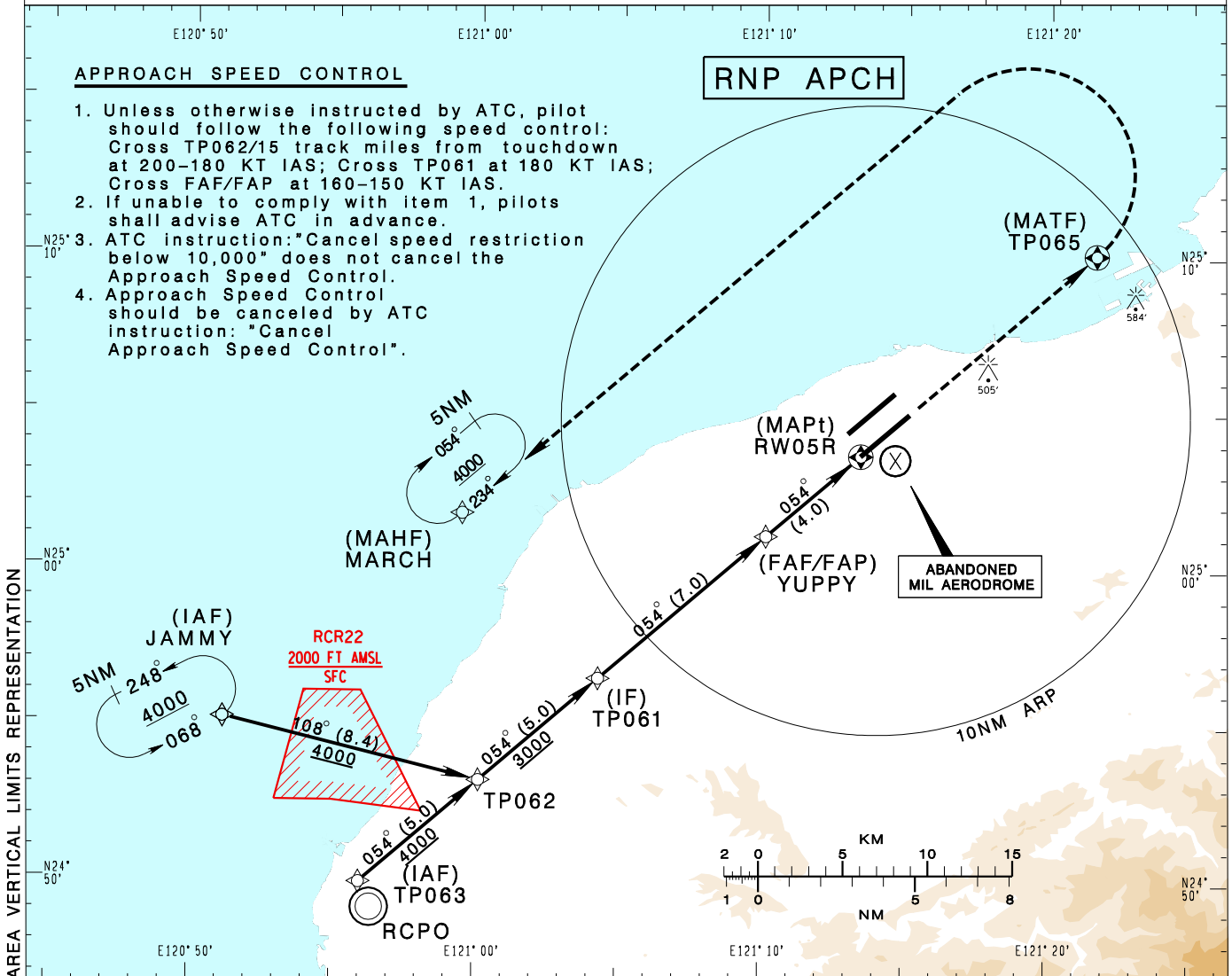
RCTP
RNP RWY05R

TAIPEI APP 125.1 128.5 125.6	TAIPEI TWR 118.7 129.3	ATIS 127.6			
Apt Elev: 108'		Rwy05R DTHR Elev: 107'		Trans Level: FL130	Trans Alt: 11,000'
BEARINGS ARE MAGNETIC; DISTANCES ARE NAUTICAL MILES; ELEVATIONS, HEIGHTS IN FEET					

APPROACH SPEED CONTROL

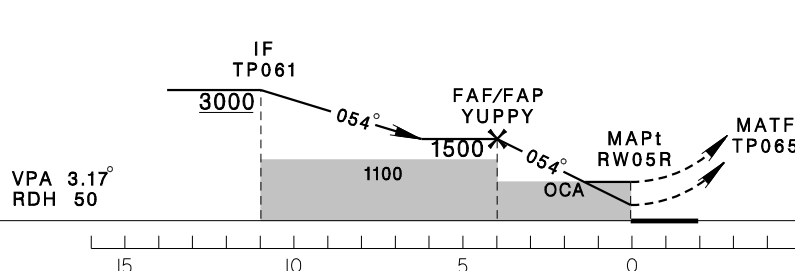
- Unless otherwise instructed by ATC, pilot should follow the following speed control:
Cross TP062/15 track miles from touchdown at 200-180 KT IAS; Cross TP061 at 180 KT IAS; Cross FAF/FAP at 160-150 KT IAS.
- If unable to comply with item 1, pilots shall advise ATC in advance.
- ATC instruction: "Cancel speed restriction below 10,000" does not cancel the Approach Speed Control.
- Approach Speed Control should be canceled by ATC instruction: "Cancel Approach Speed Control".

RNP APCH



CHANGES: NEW PAGE NUMBER, UPDATE RESTRICTED AREA, VERTICAL LIMITS REPRESENTATION

4NM	3NM	2NM	DIST to THR05R
1500	1164	828	ADVISORY ALT



MISSED APCH:
CLIMB DIRECT TO TP065, THEN TURN LEFT DIRECT TO MARCH, MAINTAIN 4000 AND HOLD.

MINIMA (OCA IN FT, VIS IN M, OCH IN FT)

CATEGORY		A	B	C	D
LNAV/VNAV	STRAIGHT IN	610/1600 503	610/1600 503	610/1600 503	610/1600 503
	STRAIGHT IN (ALS OUT)	610/2400 503	610/2400 503	610/2400 503	610/2400 503
LNAV	STRAIGHT IN	610/1600 502	610/1600 502	610/1600 502	610/1600 502
	STRAIGHT IN (ALS OUT)	610/2400 502	610/2400 502	610/2400 502	610/2400 502

- NOTE**
- CIRCLING NOT AUTHORIZED.
 - MAX KIAS AT JAMMY/TP063 210 KTS.
 - BARO-VNAV NOT AUTHORIZED BELOW 0° C.
 - DME/DME NOT AUTHORIZED.